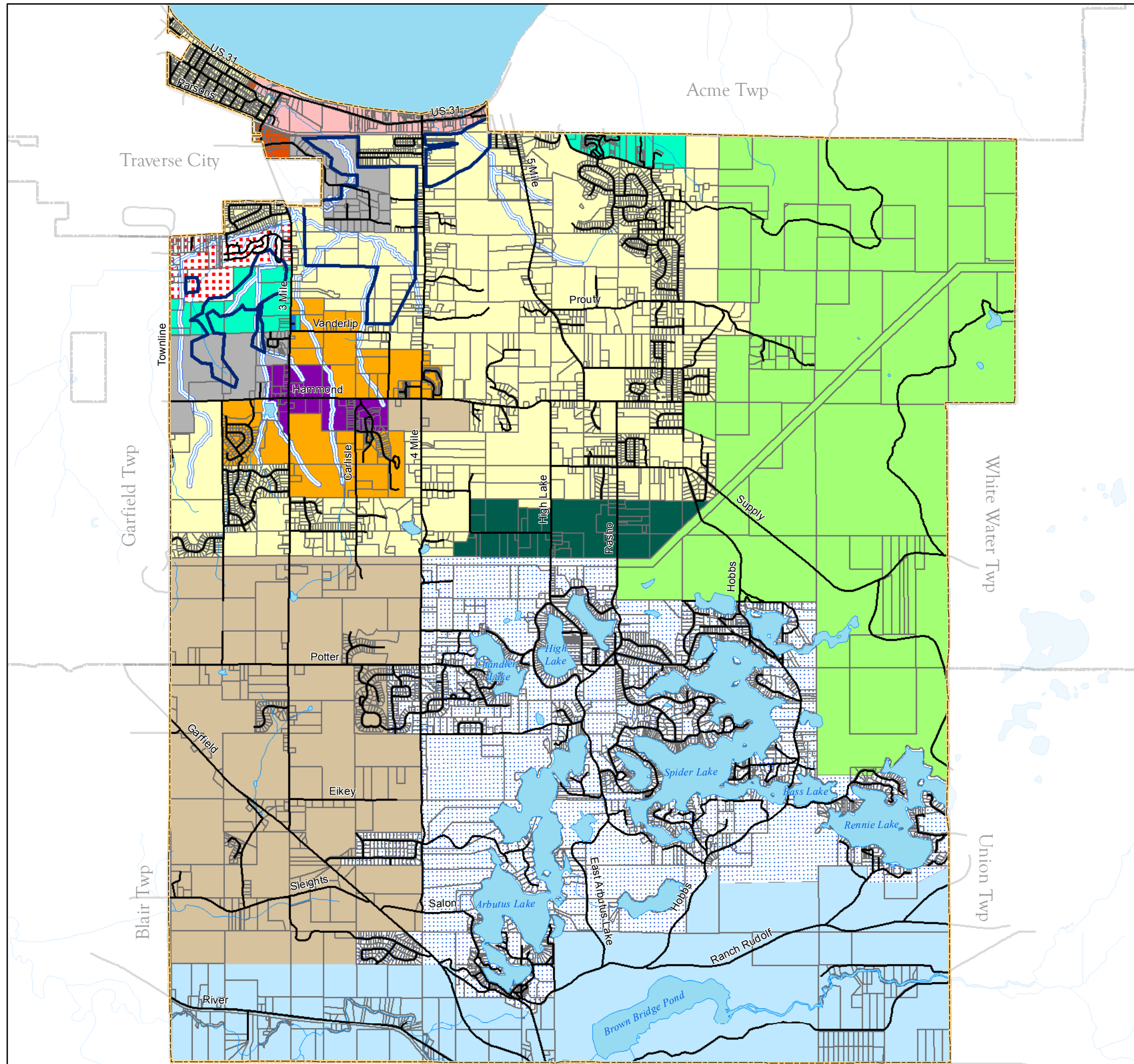


East Bay Charter Township

Grand Traverse County, Michigan

Zoning

Effective: May 22, 2003
as amended through January 27, 2014



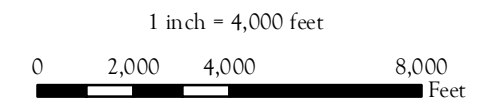
-  Mitchell and Baker Creek Overlay District
-  100' Stream Buffer
-  LDR, Low Density Residential
-  MDR, Moderate Density Residential
-  LB, Local Business
-  HDR, High Density Residential
-  RR, Rural Residential
-  LA, Lakes Area
-  AG, Agricultural
-  NA, Natural Area
-  BR, Boardman River
-  EBC, East Bay Corners
-  PO, Professional Office
-  RB, Regional Business
-  IND, Industrial
-  MHC, High Density Residential & Manufactured Housing

The undersigned hereby certify this map as the official adopted zoning map of East Bay Charter Township

Glen Lile
Township Supervisor

Susanne M. Courtade
Township Clerk

Date _____



Williams & Works