

SOCIAL CHARACTERISTICS

Table 1: Populations in Grand Traverse County
1970-2005

	1970	1980	1990	2000	2005*	Change 1970-1980	Change 1980-1990	Change 1990-2000	Change 2000-2005
Grand Traverse County	39,175	54,899	64,273	77,654	83,971	+15,724	+9,374	+13,381	+6,317
Acme Township	1,662	2,909	3,447	4,332	4,500	1,247	538	885	168
Blair Township	1,667	4,613	5,249	6,448	6,856	2,936	636	1,199	408
EAST BAY TOWNSHIP	3,356	6,212	8,307	9,919	10,241	2,856	2,095	1,612	322
Fife Lake Township	638	1,056	1,344	1,517	2,558	418	288	173	1,041
Garfield Township	4,917	8,747	10,516	13,840	15,801	3,830	1,769	3,324	1,961
Grant Township	507	676	745	947	1,191	169	69	202	244
Long Lake Township	1,584	3,823	5,977	7,648	7,912	2,239	2,154	1,671	264
Mayfield Township	651	806	967	1,271	1,595	155	161	304	324
Paradise Township	1,434	2,117	2,508	4,191	4,730	683	391	1,683	539
Peninsula Township	2,642	3,833	4,340	5,265	5,450	1,191	507	925	185
Traverse City	18,048	15,516	15,116	14,383	14,365	-2,532	-400	-733	-18
Union Township	57	185	255	417	641	128	70	162	224
Whitewater Township	796	1,409	1,825	2,467	2,799	613	416	642	332
Village of Fife Lake	274	402	394	466	466	128	-8	72	0
Village of Kingsley	632	664	738	1,469	1,524	32	74	731	55

Source: U.S. Department of Census

* 2005 U.S. Census Bureau Estimates

Grand Traverse County

Table 2.1 Population Change by Age 1980-1990

Age Group	1980	% of Total	1990	% of Total
Under 5	4,243	8.0%	4,856	7.0%
5 to 17	11,869	22.0%	12,556	20.0%
18 to 20	3,119	6.0%	2,834	4.0%
21 to 24	4,132	7.0%	3,023	5.0%
25 to 44	16,285	29.0%	21,951	34.0%
45 to 54	4,831	7.0%	6,181	10.0%
55 to 59	2,431	4.0%	2,474	4.0%
60 to 64	2,090	4.0%	2,508	4.0%
65+	5,899	11.0%	7,890	12.0%

East Bay Township

Table 2.2 Population Change by Age 1980-1990

Age Group	1980	% of Total	1990	% of Total
Under 5	576	9%	726	9%
5 to 17	1396	22%	1729	21%
18 to 20	281	4%	305	4%
21 to 24	465	8%	367	4%
25 to 44	2195	35%	3257	39%
45 to 54	463	8%	716	9%
55 to 59	224	4%	266	3%
60 to 64	209	3%	276	3%
65+	403	7%	665	8%

Grand Traverse County

Table 2.3 Population Change 2000-2005*

	2000	2005	% change
Under 5	4,723	4,719	-0.1%
Age 5 - 9	5,439	4,927	-9.4%
Age 10 - 19	11,559	11,629	0.6%
Age 20 - 24	4,118	5,148	25.0%
Age 25 - 29	4,560	5,831	27.9%
Age 30 - 39	11,402	11,002	-3.5%
Age 40 - 49	13,607	13,864	1.9%
Age 50 - 59	9,021	11,676	29.4%
Age 60 - 64	3,081	3,601	16.9%
Age 65+	10,144	11,574	14.1%

* 2005 figures based on U.S. Census Bureau estimates

East Bay Township

Table 2.4 Population Change 2000 -2005

Age Group	2000	% of Total
Under 5	612	6.2
5-14	1,629	16.4
15-19	825	8.3
20-24	555	5.6
25-44	3,058	30.7
45-54	1,690	17
55-59	378	3.8
60-64	383	3.9
65+	807	8.1
Total	9,937	100%

POPULATION PROJECTIONS

Statistical averaging techniques were employed to project the Township’s likely population growth to the year 2030. These approaches are intended to provide a general sense of growth in the future. In communities such as East Bay, where significant growth has occurred in recent decades, future growth trends may not parallel historical trends. The following generalizations are limited in scope and are based on past trends documented by the United States Census Bureau and Township data.

These projections have implications regarding future land use necessities, the demand for various public services and capital improvements, and help to understand the future position of the Township in terms of growth and total population. The following describes the projection techniques.

The Growth Rate (or geometric) **Method** projects future population growth or decline based on the rate of growth in the Township in the past. Using the growth rate method, the following assumes that growth in the future will occur at the same average rate as has occurred annually since 1970. As indicated previously, the Township has experienced considerable population growth annually since 1970, with an average annual increase of 3.6% over this period.

Average				
Annual Growth Rate	2005			
<u>1970-2000</u>	<u>Population</u>	<u>2010</u>	<u>2020</u>	<u>2030</u>
3.6%	10,241	12,221	17,406	24,794

The Arithmetic Method is similar to the growth rate method in that population projections are based on growth that occurred in preceding decades. This method, however, bases population growth on the overall average increase in the number of persons per year, rather than on growth rates. The following projections are based on the total net increase of 6,885 persons between 1970 and 2005 in East Bay Township, and an average increase of 196.7 persons per year, based on U.S. Census figures.

Average				
Increase Each Decade	2005			
<u>(Number of Persons)</u>	<u>Population</u>	<u>2010</u>	<u>2020</u>	<u>2030</u>

It is reasonable to project that East Bay Township’s population will grow to over 13,000 by 2015.

196.7 10,241 11,225 13,192 15,159

The Building Permit Method may be the most reliable projection technique since it depicts present growth trends based on the actual number of residential building permits issued by the Township. East Bay Township has issued 105 residential building permits on average per year from 1997 to July 2007.¹ The Township’s average household size is 2.67 persons.² Extrapolating these figures into the future may project likely population growth, if current trends remain the same. This population projection technique holds that East Bay Township will grow by an average of 280 persons per year.

<u>Average No.</u> <u>Permits/Yr.</u>	<u>Persons</u> <u>Per H/H</u>	<u>2005</u> <u>Population</u>	<u>2010</u>	<u>2020</u>	<u>2030</u>
105	2.67	10,241	11,643	14,446	17,249

The table below summarizes the preceding information. By averaging the results of these methods, it is reasonable to predict that the population of East Bay Township will grow to approximately 7,700 persons by the year 2010; roughly 10,000 by the year 2020; and almost 13,200 by the year 2030. The projections summarized here assume that past trends will continue into the future, and are limited in scope by such a supposition. Projections are based on population counts documented by the United States Census and building permit data from the Township.

POPULATION PROJECTION SUMMARY

	<u>2005</u>	<u>2010</u>	<u>2020</u>	<u>2030</u>
Growth Rate	10,241	12,221	17,406	24,794
Arithmetic	10,241	11,225	13,192	15,159
Building Permits	<u>10,241</u>	<u>11,643</u>	<u>14,446</u>	<u>17,249</u>
Average		11,696	15,015	19,067

While the population projection summary above is limited in its ability to precisely predict the future, it does give a strong sense of where current growth trends may carry the East Bay community in the future. If the economic and social characteristics of Grand Traverse County generally remain stable, East Bay Township should plan for a steady influx of new residents and development.

¹ East Bay Township data
² United States Census Bureau, 2000
 U.S. Census Estimates, 2005

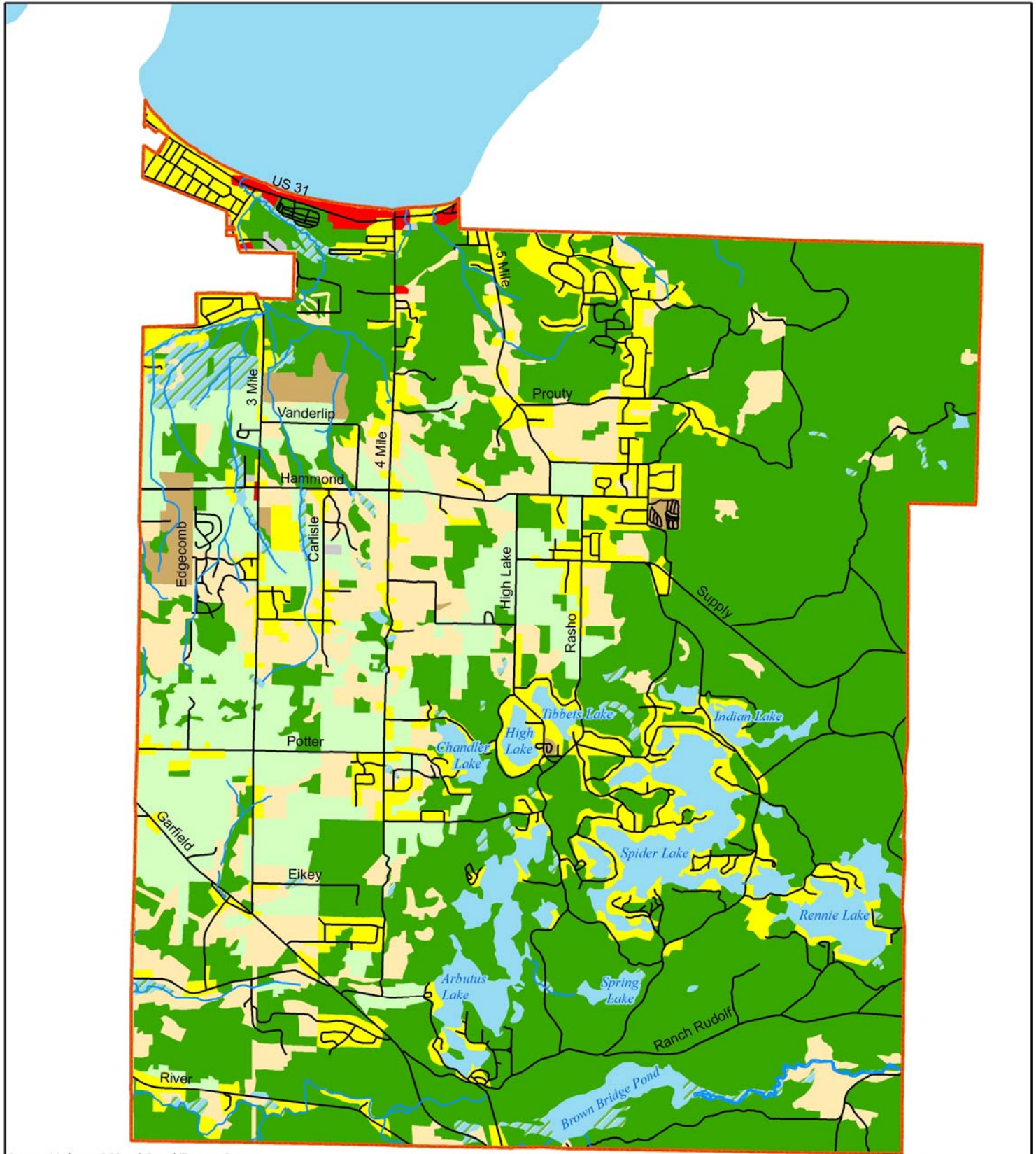
The above population projection indicates a near doubling of the Township population over the next two and a half decades. The impact this is likely to have on recreational planning will be significant. In addition to setting aside land for recreational purposes the Township is also interested in preserving farmland and the general rural character of the community. As such, new development will likely occur in more compact forms in which individual lot sizes are smaller, thus inducing young families and active adults to seek alternative recreational options to their own backyards. This would suggest that the Township may wish to begin planning in the long term for the inclusion of smaller neighborhood parks and pocket parks where housing densities are significant.

The cost of such neighborhood parks should not be nearly as significant as their larger counterparts, specifically because they need only be designed as planned community green space for spontaneous recreation. Typical uses of neighborhood parks may be for family picnics, spontaneous youth activities such as tag, playing catch, or pick-up sports matches (i.e. soccer, touch football, etc.), or they may simply be residential lots devoted to a community garden, fountain or resting place along the way.

Regardless of their primary use, these types of parks and open spaces function most appropriately where they are surrounded by a number and variety of uses. While some parks may be best suited to an isolated portion of a residential neighborhood, green spaces are most often utilized and enjoyed in areas which are adjacent to significant pedestrian traffic circulation routes offering connections to housing, shopping, local institutions and workplaces. This would suggest a need to plan for small green spaces near schools, libraries, and mixed use corridors. Most importantly, these smaller parks should be positioned in such a manner that they can be easily and casually monitored by local residents, shopkeepers and other passersby.

LOCATION OF POPULATIONS WITH UNIQUE NEEDS.

Persons with unique needs are scattered about, and are not concentrated in any one area. It is the intention of the Township to include barrier free access and amenities in each recreational facility where it is prudent to do so. As noted in the recreation inventory, nearly half of the current facilities are equipped with barrier free and/or handicap amenities.



Source: Michigan CGI and Grand Traverse County

East Bay Township

Grand Traverse County, Michigan

2000 Land Use

2000 Land Use

- Wetlands
- Forest
- Agricultural/Orchards
- Rangeland
- Lakes
- Commercial
- Industrial
- Transportation/Communications
- Institutional
- Other Urban/Built-up



Williams & Works
engineers • planners • surveyors
a tradition of service
 616.234.1900 phone • 616.234.1901 fax
 349 Ottawa Avenue NW • Grand Rapids, MI 49503

