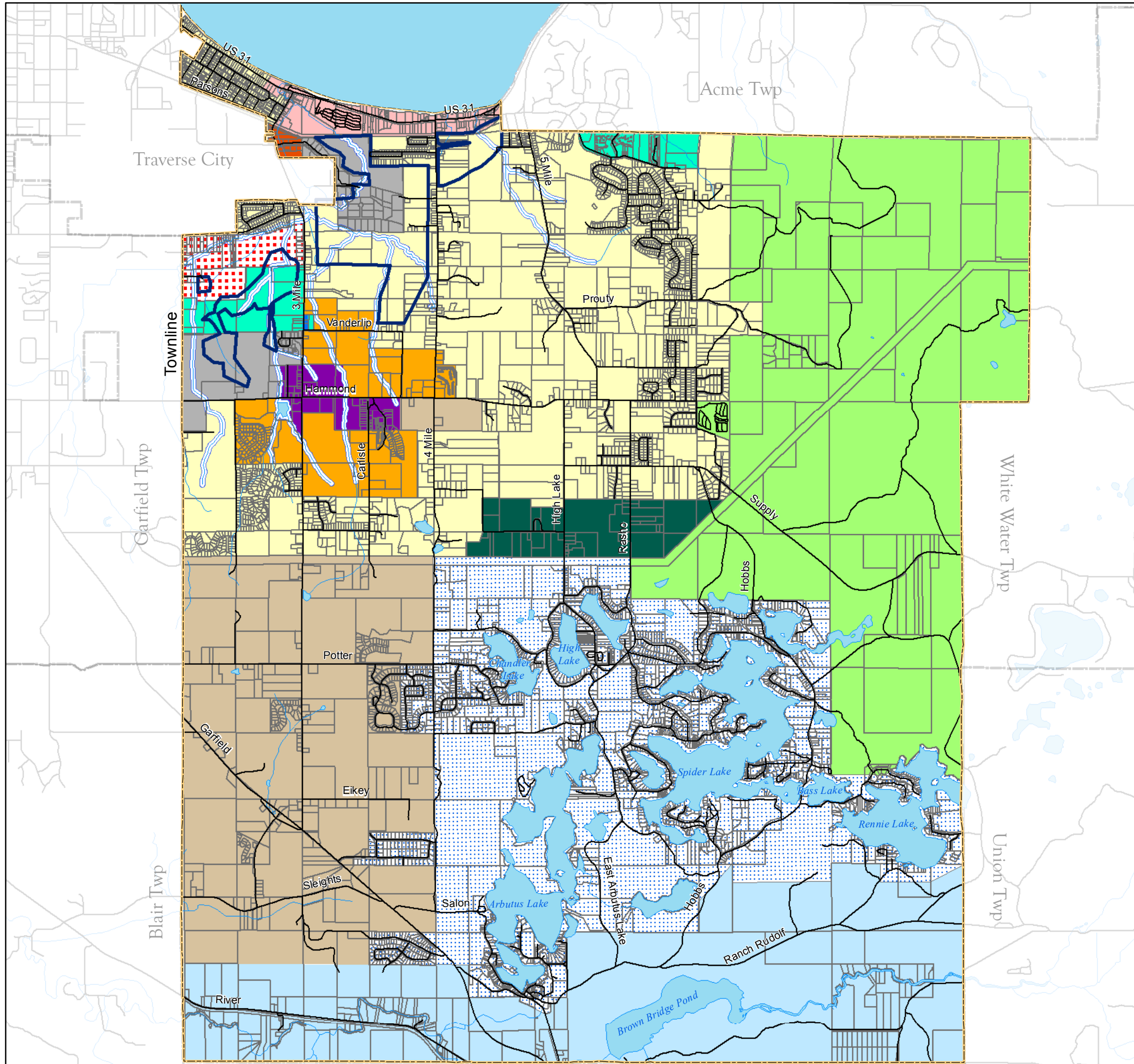


East Bay Charter Township

Grand Traverse County, Michigan

Zoning

Effective: May 18, 2010



- LDR, Low Density Residential
- MDR, Moderate Density Residential
- LB, Local Business
- HDR, High Density Residential
- RR, Rural Residential
- LA, Lakes Area
- AG, Agricultural
- NA, Natural Area
- BR, Boardman River
- VC, Village Center
- PO, Professional Office
- RB, Regional Business
- IND, Industrial
- MHC, High Density Residential & Manufactured Housing
- Mitchell and Baker Creek Overlay District
- 100' Stream Buffer

The undersigned hereby certify this map as the official adopted zoning map of East Bay Charter Township

Glen Lile
Township Supervisor

Susanne Courtade
Township Clerk

Date _____

1 inch = 4,000 feet



Williams & Works
engineers - planners - surveyors
a tradition of service
416.224.1500 phone - 416.224.1501 facsimile
549 Ottawa Avenue NW - Grand Rapids, MI 49503